

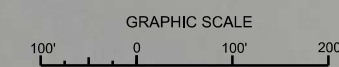
MATCHLINE SHEET NO. 019 STA. 40+00

MATCHLINE SHEET NO. 017 STA. 10+00

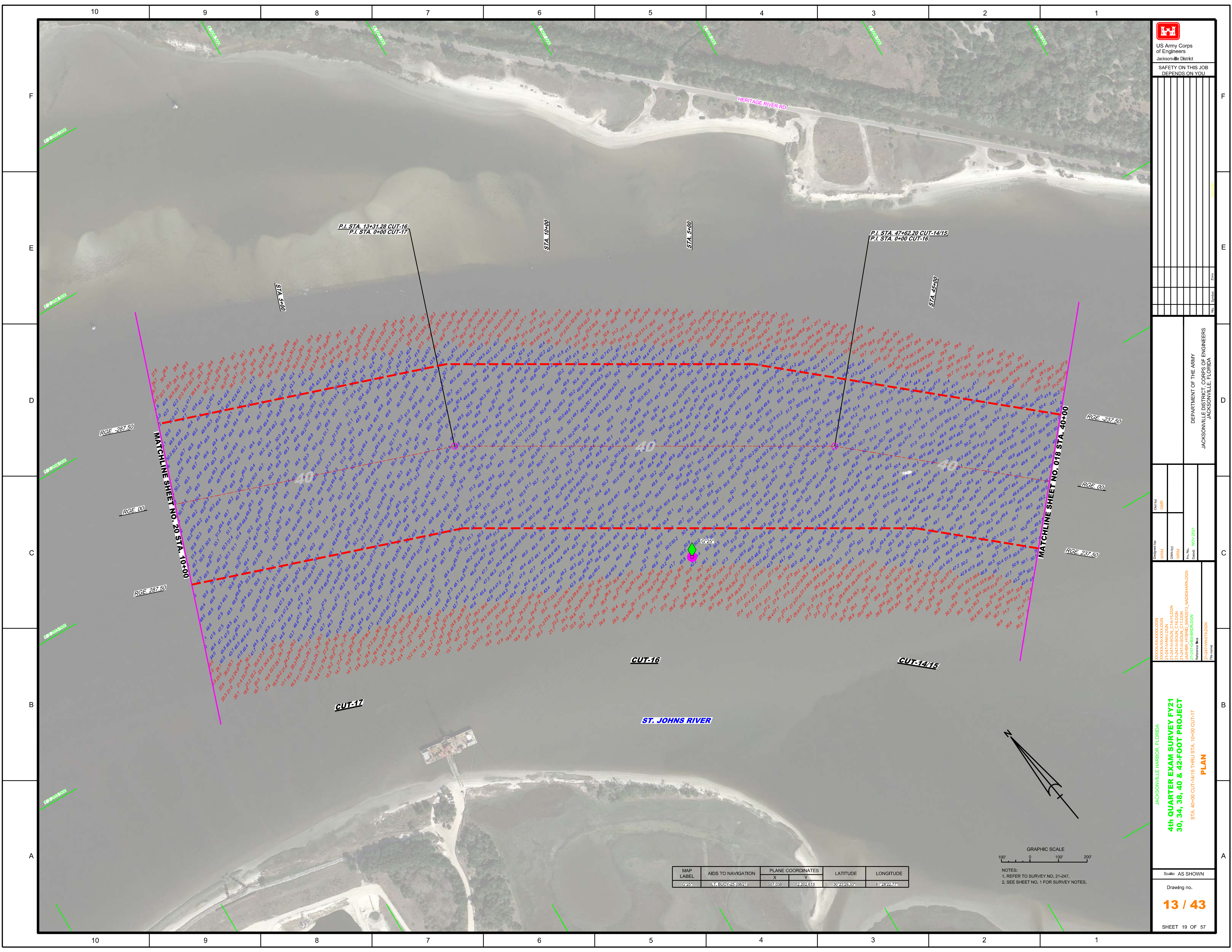
**CUT-14/15**

**ST JOHNS RIVER**

 US Army Corps of Engineers Jacksonville District SAFETY ON THIS JOB DEPENDS ON YOU									
<table border="1" style="width: 100%; border-collapse: collapse;"> <tr> <td style="width: 50%; text-align: center;">           JACKSONVILLE HARBOR, FLORIDA  <b>4th QUARTER EXAM SURVEY FY21</b>  <b>30, 34, 38, 40 &amp; 42-FOOT PROJECT</b>            STA. 10+00 THRU STA. 40+00 CUT-14/15  <b>PLAN</b> </td> <td style="width: 50%; text-align: center;">           DEPARTMENT OF THE ARMY            JACKSONVILLE DISTRICT, CORPS OF ENGINEERS            JACKSONVILLE, FLORIDA         </td> </tr> </table>	JACKSONVILLE HARBOR, FLORIDA <b>4th QUARTER EXAM SURVEY FY21</b> <b>30, 34, 38, 40 &amp; 42-FOOT PROJECT</b> STA. 10+00 THRU STA. 40+00 CUT-14/15 <b>PLAN</b>	DEPARTMENT OF THE ARMY JACKSONVILLE DISTRICT, CORPS OF ENGINEERS JACKSONVILLE, FLORIDA	<table border="1" style="width: 100%; border-collapse: collapse;"> <tr> <td style="width: 50%;">           Drawn by: <b>WRM</b>            Check by: <b>GHR</b> </td> <td style="width: 50%;">           Date: <b>NOV 2021</b> </td> </tr> <tr> <td style="width: 50%;">           Project No: <b>21-247-6B-BR10-DGN</b> </td> <td style="width: 50%;">           Drawing No: <b>12 / 43</b> </td> </tr> <tr> <td colspan="2" style="text-align: center;">           SHEET 18 OF 57         </td> </tr> </table>	Drawn by: <b>WRM</b> Check by: <b>GHR</b>	Date: <b>NOV 2021</b>	Project No: <b>21-247-6B-BR10-DGN</b>	Drawing No: <b>12 / 43</b>	SHEET 18 OF 57	
JACKSONVILLE HARBOR, FLORIDA <b>4th QUARTER EXAM SURVEY FY21</b> <b>30, 34, 38, 40 &amp; 42-FOOT PROJECT</b> STA. 10+00 THRU STA. 40+00 CUT-14/15 <b>PLAN</b>	DEPARTMENT OF THE ARMY JACKSONVILLE DISTRICT, CORPS OF ENGINEERS JACKSONVILLE, FLORIDA								
Drawn by: <b>WRM</b> Check by: <b>GHR</b>	Date: <b>NOV 2021</b>								
Project No: <b>21-247-6B-BR10-DGN</b>	Drawing No: <b>12 / 43</b>								
SHEET 18 OF 57									



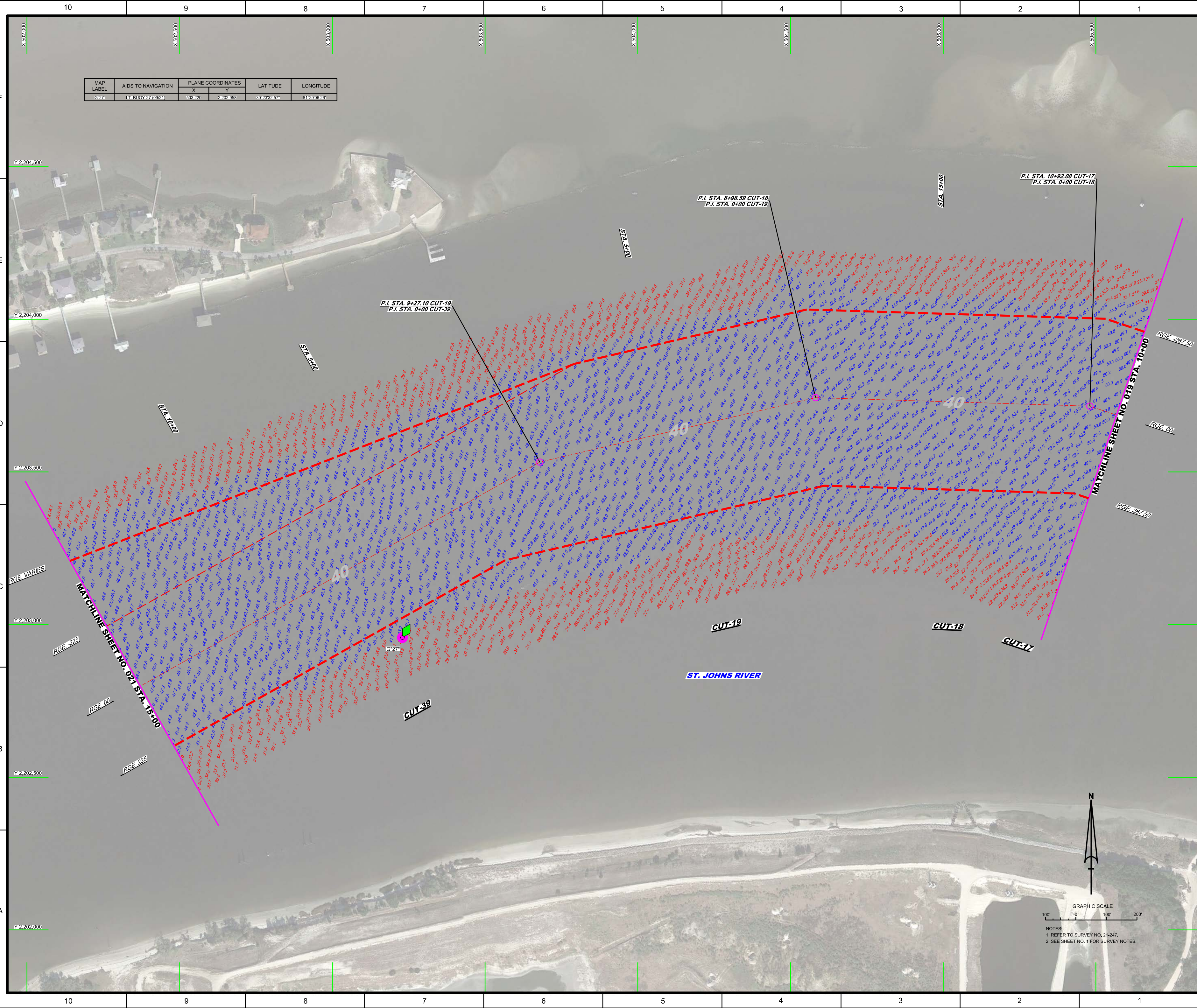
NOTES:  
 1. REFER TO SURVEY NO. 21-247.  
 2. SEE SHEET NO. 1 FOR SURVEY NOTES.



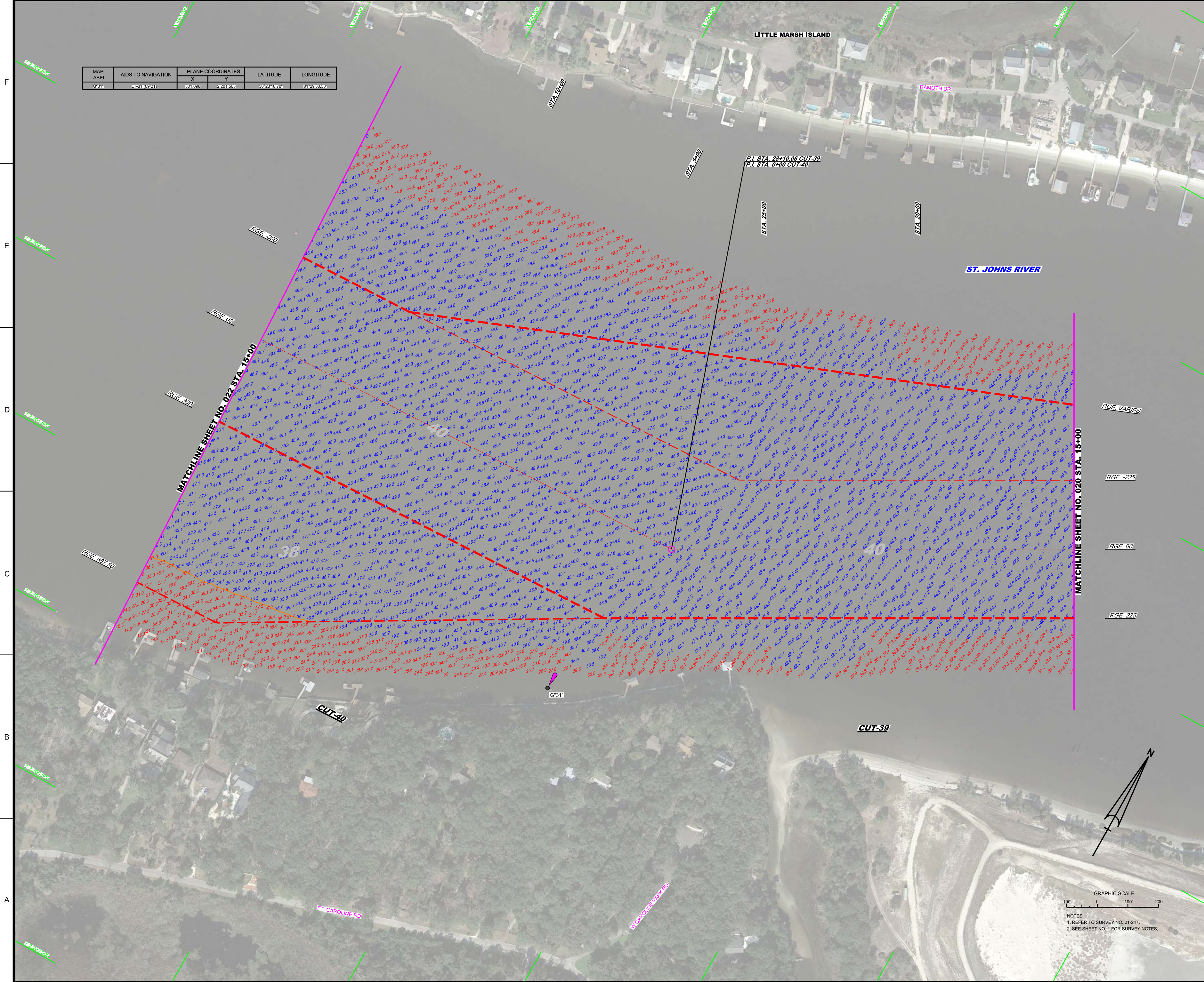
MAP LABEL	AIDS TO NAVIGATION	PLANE COORDINATES		LATITUDE	LONGITUDE
		X	Y		
G25	LT. BUOY-25 (0821)	507,038	2,202,613	30°25'29.33"	81°26'22.77"

NOTES:  
1. REFER TO SURVEY NO. 21-247.  
2. SEE SHEET NO. 1 FOR SURVEY NOTES.

MAP LABEL	AIDS TO NAVIGATION	PLANE COORDINATES		LATITUDE	LONGITUDE
		X	Y		
G27*	LT BUOY-27 (0921)	503,223	2,202,553	30°29'52.7"	81°29'08.26"



NOTES:  
1. REFER TO SURVEY NO. 21-247.  
2. SEE SHEET NO. 1 FOR SURVEY NOTES.



MAP LABEL	AIDS TO NAVIGATION	PLANE COORDINATES		LATITUDE	LONGITUDE
		X	Y		
G*31	LT-311 (0921)	501,058	42,017,555	30°28'48.70"	81°29'40.55"

**US Army Corps of Engineers**  
Jacksonville District  
**SAFETY ON THIS JOB DEPENDS ON YOU**

DEPARTMENT OF THE ARMY  
JACKSONVILLE DISTRICT, CORPS OF ENGINEERS  
JACKSONVILLE, FLORIDA

Checked By: GHR  
Designed By: VRM  
Drawn By: VRM  
Job No: 247-FS-BR-2LDN  
Contract: NOV 2021

JACKSONVILLE HARBOUR, FLORIDA  
4th QUARTER EXAM SURVEY FY21  
30, 34, 38, 40 & 42-FOOT PROJECT  
STA. 15+00 CUT-39 THRU STA. 15+00 CUT-40  
PLAN

Scale: AS SHOWN  
Drawing No. **15 / 43**  
SHEET 21 OF 57



US Army Corps of Engineers  
Jacksonville District

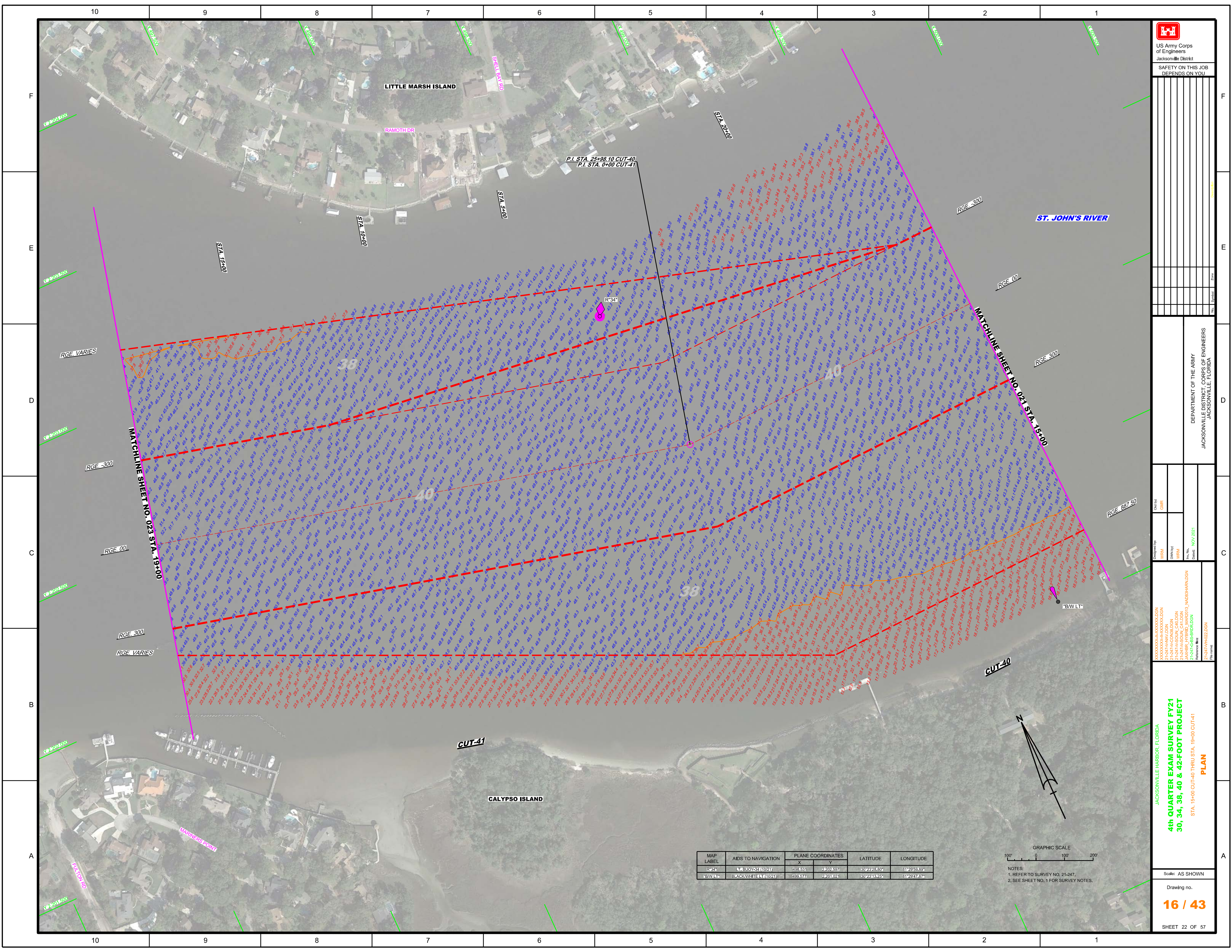
SAFETY ON THIS JOB  
DEPENDS ON YOU

DEPARTMENT OF THE ARMY  
JACKSONVILLE DISTRICT, CORPS OF ENGINEERS  
JACKSONVILLE, FLORIDA

Checked By: GHR  
Designed By: WRM  
Drawn By: WRM  
File Name: 21-247-6B-BIRLDGN  
Reference File: 21-247-6B-BIRLDGN  
Date Plotted: NOV 2021

JACKSONVILLE HARBOR, FLORIDA  
**4th QUARTER EXAM SURVEY FY21**  
30, 34, 38, 40 & 42-FOOT PROJECT  
STA. 15+00 CUT-40 THRU STA. 19+00 CUT-41  
**PLAN**

Scale: AS SHOWN  
Drawing no. **16 / 43**  
SHEET 22 OF 57



P.I. STA. 25+98.10 CUT-40  
P.I. STA. 0+00 CUT-41

MATCHLINE SHEET NO. 023 STA. 19+00

MATCHLINE SHEET NO. 024 STA. 45+00

MAP LABEL	AIDS TO NAVIGATION	PLANE COORDINATES	LATITUDE	LONGITUDE
R-341	BLACKWHITE LT (10/21)	498.531	23°23.637'	81°29'58.87"
B/W LT	BLACKWHITE LT (10/21)	499.577	23°23.102'	81°29'47.67"

GRAPHIC SCALE  
100' 0 100' 200'

NOTES:  
1. REFER TO SURVEY NO. 21-247.  
2. SEE SHEET NO. 1 FOR SURVEY NOTES.

MAP LABEL	AIDS TO NAVIGATION	PLANE COORDINATES		LATITUDE	LONGITUDE
		X	Y		
G455	LET BUOY 235 (1024)	495.62	28028.83	81°30'28.50"	81°30'28.50"
R455	LET 33 (1024)	495.63	28030.53	81°30'28.50"	81°30'28.50"
G47	LET BUOY 57 (1024)	495.67	28028.16	81°30'28.50"	81°30'28.50"

US Army Corps of Engineers  
 Jacksonville District  
 SAFETY ON THIS JOB  
 DEPENDS ON YOU

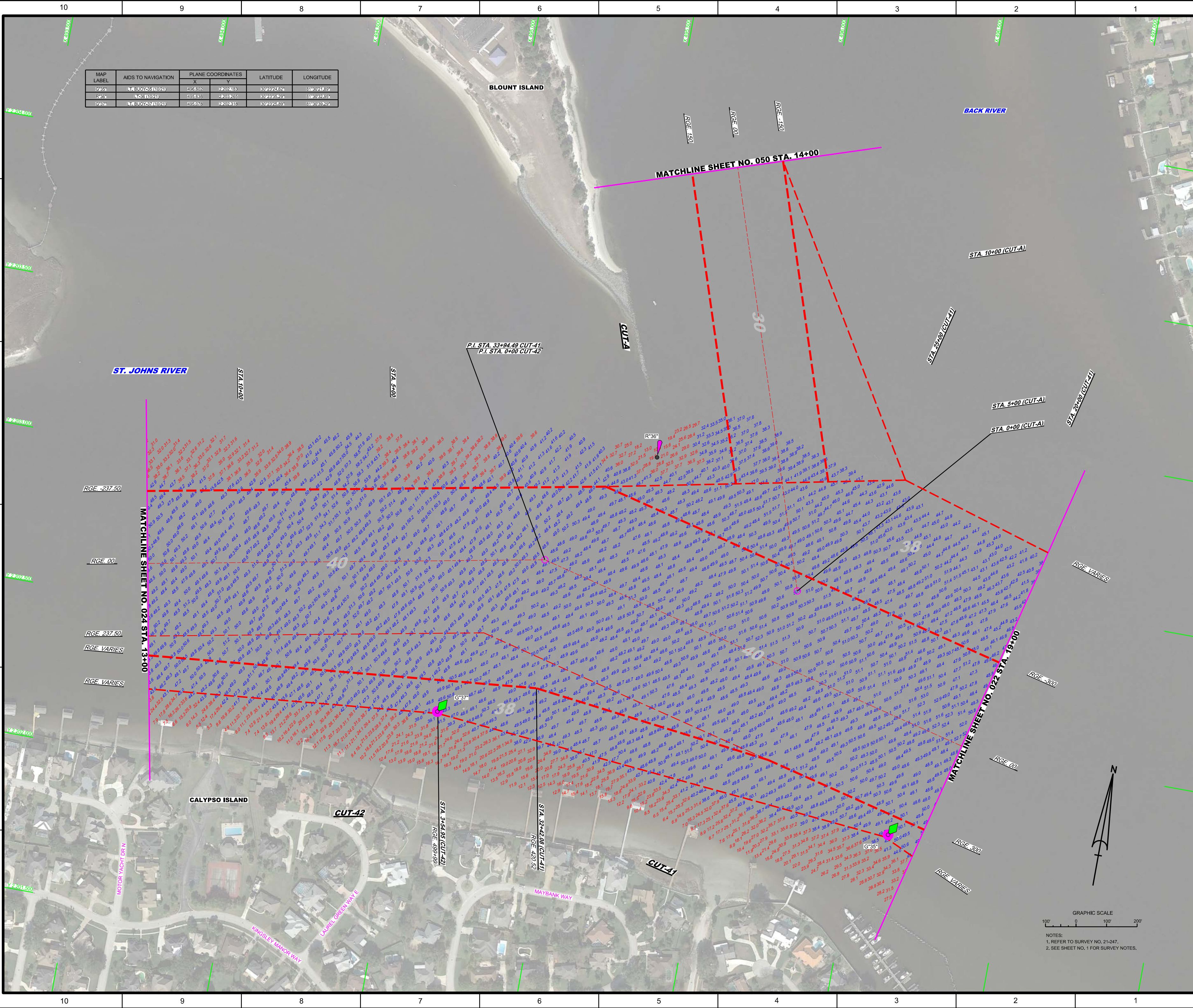
DEPARTMENT OF THE ARMY  
 JACKSONVILLE DISTRICT, CORPS OF ENGINEERS  
 JACKSONVILLE, FLORIDA

Checked By: GHR  
 Designed By: WRM  
 Drawn By: WRM  
 In Charge: WRM  
 Date: NOV 2021

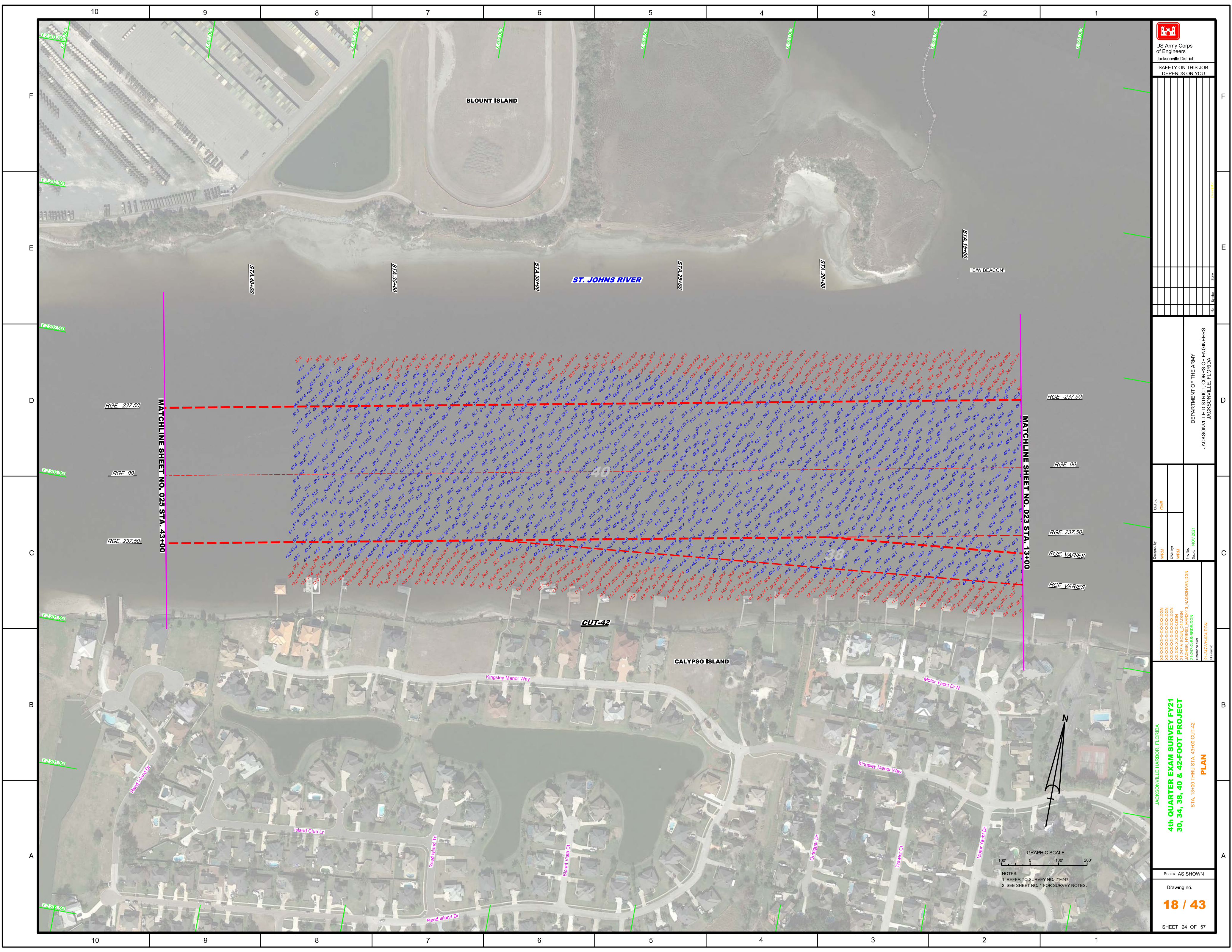
21247AAVADON  
 21247ASDIA\_CAD.DGN  
 21247ASDIA\_CAD.DWG  
 21247ASB-BS-BRIDGON  
 21247AAVADON


JACKSONVILLE HARBOR, FLORIDA  
**4th QUARTER EXAM SURVEY FY21**  
**30, 34, 38, 40 & 42-FOOT PROJECT**  
 STA. 19+00 CUT-41 THRU STA 13+00 CUT-42 &  
 STA. 0+00 THRU STA. 14+00 CUT-4A  
**PLAN**

Scale: AS SHOWN  
 Drawing no. **17 / 43**  
 SHEET 23 OF 57



GRAPHIC SCALE  
 100' 0 100' 200'  
 NOTES:  
 1. REFER TO SURVEY NO. 21-247.  
 2. SEE SHEET NO. 1 FOR SURVEY NOTES.



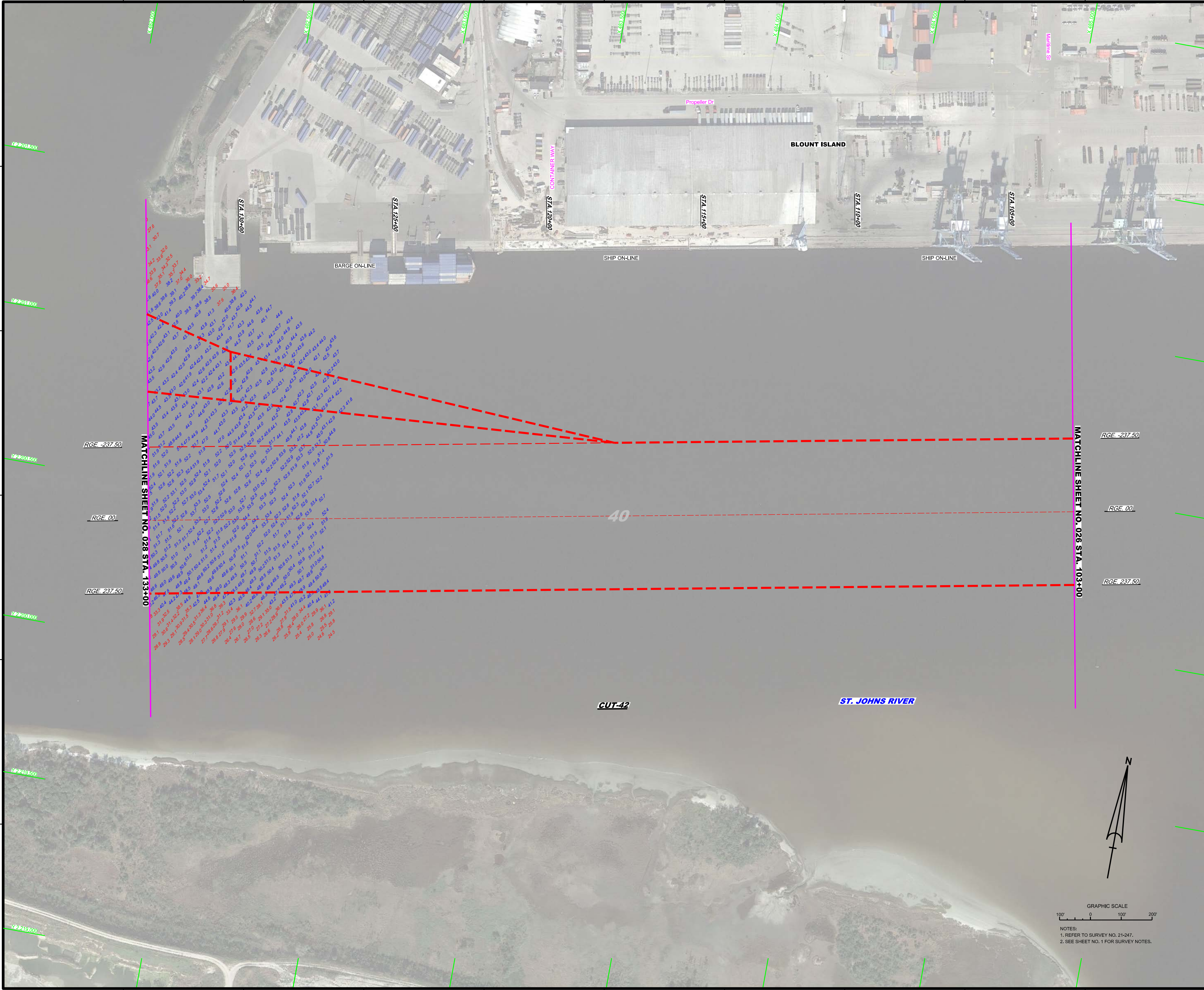
  
 US Army Corps of Engineers  
 Jacksonville District  
 SAFETY ON THIS JOB  
 DEPENDS ON YOU

Department of the Army  
 Jacksonville District, Corps of Engineers  
 Jacksonville, Florida

JACKSONVILLE HARBOR, FLORIDA  
**4th QUARTER EXAM SURVEY FY21**  
**30, 34, 38, 40 & 42-FOOT PROJECT**  
 STA. 13+00 THRU STA. 43+00 CUT-42  
**PLAN**

GRAPHIC SCALE  
 100' 0 100' 200'  
 NOTES:  
 1. REFER TO SURVEY NO. 21-247.  
 2. SEE SHEET NO. 1 FOR SURVEY NOTES.

Scale: AS SHOWN  
 Drawing no.  
**18 / 43**  
 SHEET 24 OF 57



<p>US Army Corps of Engineers Jacksonville District SAFETY ON THIS JOB DEPENDS ON YOU</p>	
<p>DEPARTMENT OF THE ARMY JACKSONVILLE DISTRICT, CORPS OF ENGINEERS JACKSONVILLE, FLORIDA</p>	
<p>Checked By: GHR</p>	<p>Drawn By: WRM</p>
<p>Designed By: WRM</p>	<p>File No: 21-247-6B-SR-BR-02DN</p>
<p>21-247-6B-SR-BR-02DN</p>	<p>NOV 2021</p>
<p>JACKSONVILLE HARBOR, FLORIDA <b>4th QUARTER EXAM SURVEY FY21</b> <b>30, 34, 38, 40 &amp; 42-FOOT PROJECT</b> STA. 103+00 THRU STA. 133+00 CUT-42 <b>PLAN</b></p>	
<p>Scale: AS SHOWN</p>	
<p>Drawing no. <b>19 / 43</b></p>	
<p>SHEET 27 OF 57</p>	

GRAPHIC SCALE  
100' 0 100' 200'

NOTES:  
1. REFER TO SURVEY NO. 21-247.  
2. SEE SHEET NO. 1 FOR SURVEY NOTES.



10 9 8 7 6 5 4 3 2 1

F  
E  
D  
C  
B  
A

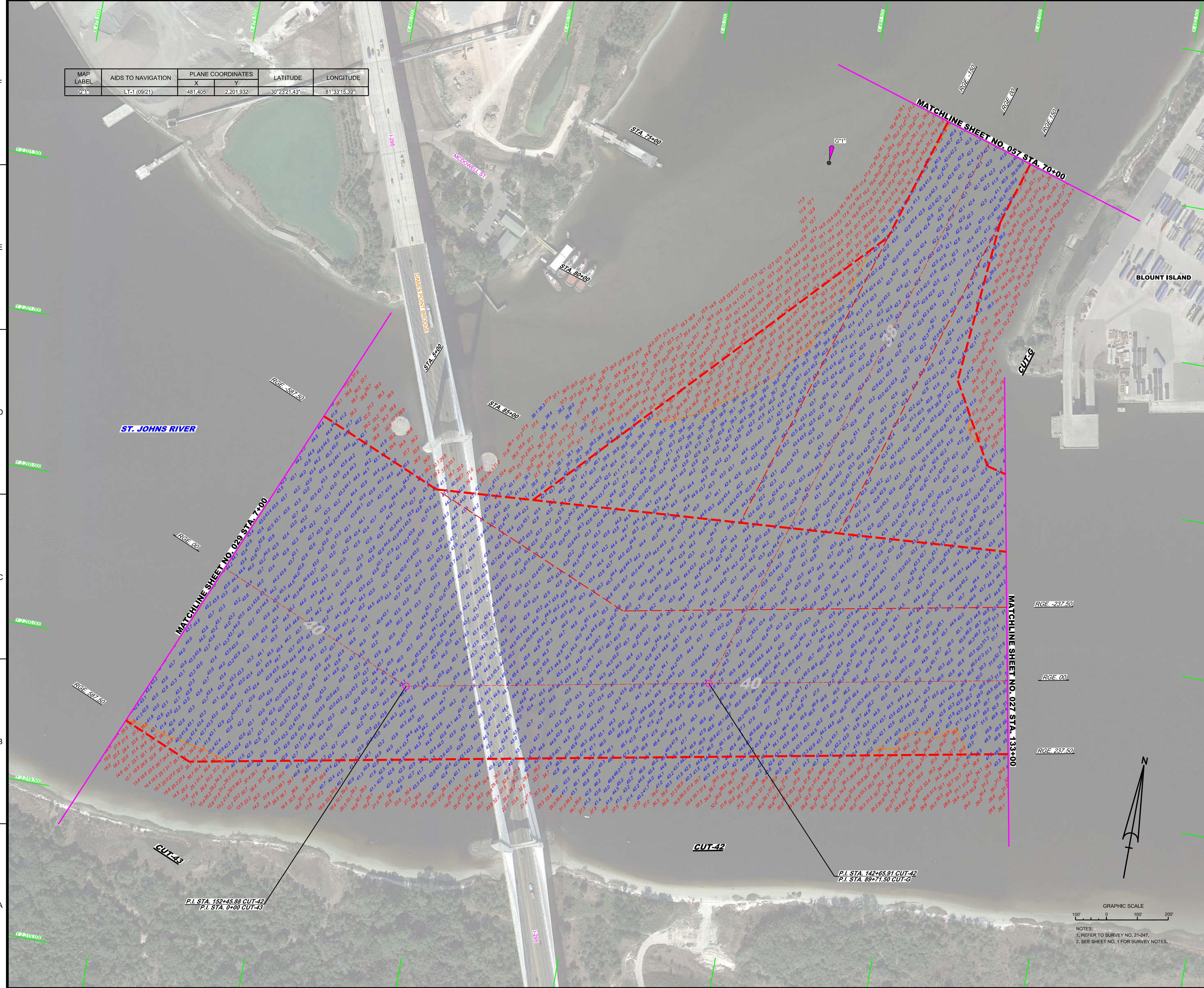
MAP LABEL	AIDS TO NAVIGATION	PLANE COORDINATES		LATITUDE	LONGITUDE
		X	Y		
G*1	LT-1 (09/21)	481,405	2,201,932	30°23'21.43"	81°33'15.59"

**US Army Corps of Engineers**  
Jacksonville District

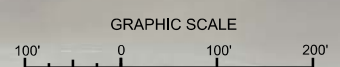
SAFETY ON THIS JOB  
DEPENDS ON YOU

DEPARTMENT OF THE ARMY  
JACKSONVILLE DISTRICT, CORPS OF ENGINEERS  
JACKSONVILLE, FLORIDA

Checked By: GHR  
Designed By: WRM  
Drawn By: WRM  
Reviewed By: JAWR (WRB), JAWR (WRB), JAWR (WRB), JAWR (WRB)  
Reference: 21-247-PH-02-000  
Date: NOV 2021

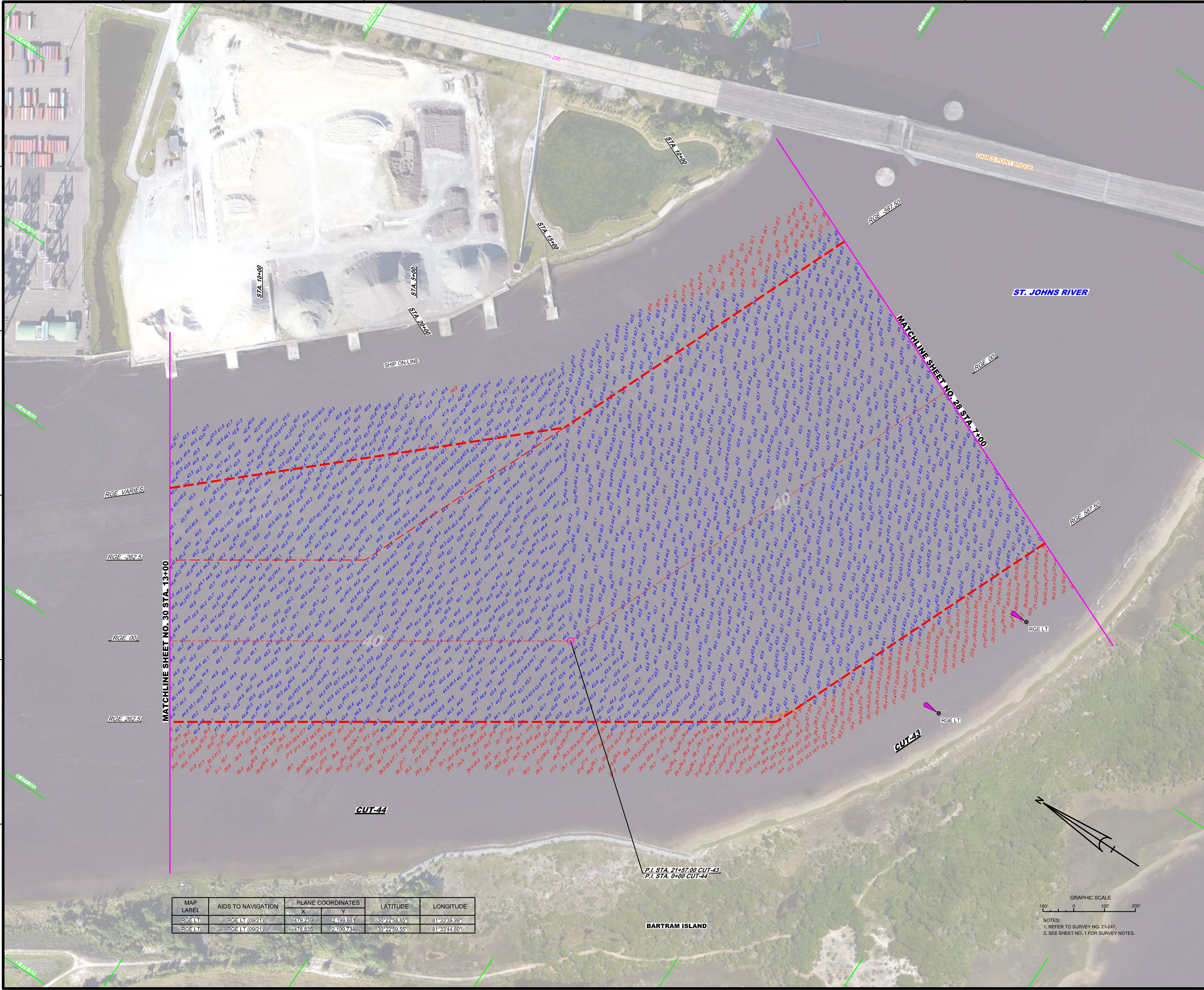


ST. JOHNS RIVER



NOTES:  
1. REFER TO SURVEY NO. 21-247.  
2. SEE SHEET NO. 1 FOR SURVEY NOTES.

JACKSONVILLE HARBOR, FLORIDA  
**4th QUARTER EXAM SURVEY FY21**  
30, 34, 38, 40 & 42-FOOT PROJECT  
STA. 133+00 CUT-42 THRU STA. 7+00 CUT-43 AND  
STA. 70+00 THRU STA. 68+71.30 CUT-G  
**PLAN**



MATCHLINE SHEET NO. 30 STA. 13+00

MATCHLINE SHEET NO. 28 STA. 7+00

MAP LABEL	AIDS TO NAVIGATION	PLANE COORDINATES		LATITUDE	LONGITUDE
		X	Y		
RGELT	RGELT (0921)	479.239	2,199.661	30°22'58.85"	81°33'39.99"
RGELT	RGELT (0921)	478.835	2,199.734	30°22'59.55"	81°33'44.60"

P.I. STA. 21+57.00 CUT-43  
P.I. STA. 0+00 CUT-44

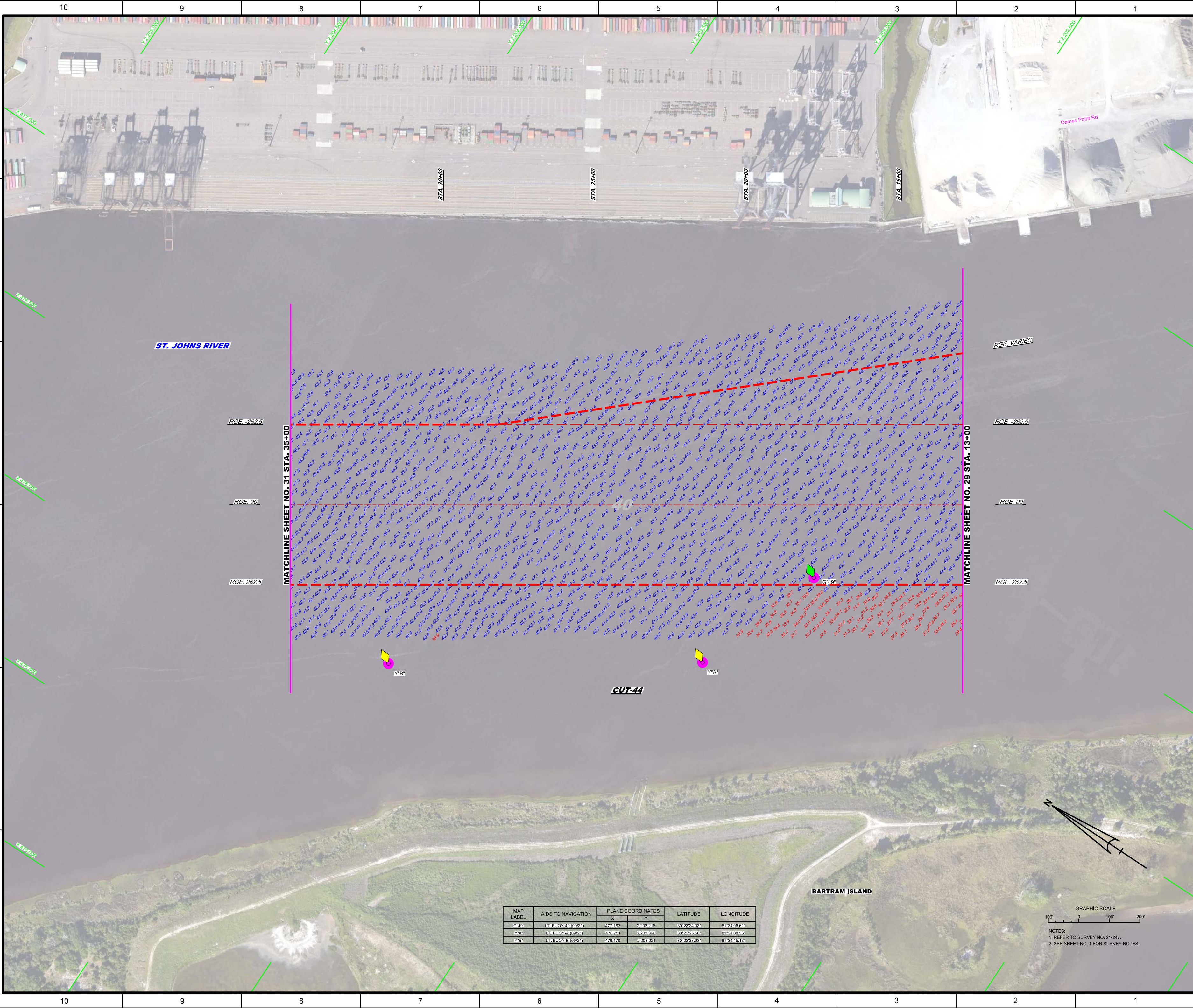
GRAPHIC SCALE  
0 100' 200'  
NOTES:  
1. REFER TO SURVEY NO. 21-247.  
2. SEE SHEET NO. 1 FOR SURVEY NOTES.

F  
E  
D  
C  
B  
A

F  
E  
D  
C  
B  
A

10 9 8 7 6 5 4 3 2 1

10 9 8 7 6 5 4 3 2 1



ST. JOHNS RIVER

Dames Point Rd

MATCHLINE SHEET NO. 31 STA. 35+00

MATCHLINE SHEET NO. 29 STA. 13+00

RGE. -262.5

RGE. -262.5

RGE. 00.

RGE. 00.

RGE. 262.5

RGE. 262.5

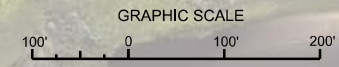
CUT-44

Y\*B


Y\*A

BARTRAM ISLAND

MAP LABEL	AIDS TO NAVIGATION	PLANE COORDINATES		LATITUDE	LONGITUDE
		X	Y		
G*49	L.T. BUOY-49 (09/21)	477,183	2,202,216	30°28'24.03"	81°34'08.61"
Y*A	L.T. BUOY-A (09/21)	476,751	2,202,366	30°28'23.55"	81°34'08.56"
Y*B	L.T. BUOY-B (09/21)	476,179	2,203,221	30°28'33.03"	81°34'15.18"



NOTES:  
1. REFER TO SURVEY NO. 21-247.  
2. SEE SHEET NO. 1 FOR SURVEY NOTES.



US Army Corps of Engineers  
Jacksonville District

SAFETY ON THIS JOB  
DEPENDS ON YOU

---

DEPARTMENT OF THE ARMY  
JACKSONVILLE DISTRICT, CORPS OF ENGINEERS  
JACKSONVILLE, FLORIDA

---

Designed by: WRM  
Checked by: GHR  
Drawn by: WRM  
Scale: NOV 2021

XXXXXXXXXXXXXXXXXXXX  
XXXXXXXXXXXXXXXXXXXX  
XXXXXXXXXXXXXXXXXXXX  
XXXXXXXXXXXXXXXXXXXX  
XXXXXXXXXXXXXXXXXXXX  
XXXXXXXXXXXXXXXXXXXX  
XXXXXXXXXXXXXXXXXXXX  
XXXXXXXXXXXXXXXXXXXX  
XXXXXXXXXXXXXXXXXXXX  
XXXXXXXXXXXXXXXXXXXX

---

JACKSONVILLE HARBOR, FLORIDA

**4th QUARTER EXAM SURVEY FY21**  
**30, 34, 38, 40 & 42-FOOT PROJECT**

STA. 13+00 THRU STA. 35+00 CUT-44

**PLAN**

Scale: AS SHOWN

Drawing no.  
**22 / 43**

SHEET 30 OF 57